



North Pacific Fisheries Commission

NPFC IUU VESSEL LIST FOR 2023

Commission Members adopted the attached NPFC IUU List at the Sixth Commission Meeting concluded on 24 February 2023.

No.	a. Name of vessel (previous names)	b. Flag of vessel (previous flags)	c. Owner (previous owners)	d. Operator of vessel (previous operators)	e. Call sign of vessel (previous call signs)	f. Lloyds/IMO number	h. Date first included on NPFC IUU List	i. Summary of activities
1	LIAO YUAN YU 071	Unknown	Not known	Not known	Not known	Not known	29 Aug. 2017	It was seen at 42°15.4'N, 153°22.8'E on 23 Aug 2016. When the Japanese patrol vessel approached, a vessel crew tried to hide the vessel name. Communication between the Japanese patrol vessel and LIAO YUAN YU 071 indicated that they hid the vessel name because they didn't want to be caught. (Port displayed on the vessel: Shidao; Vessel type; Lighted lift net vessel; Tonnage: 800t)



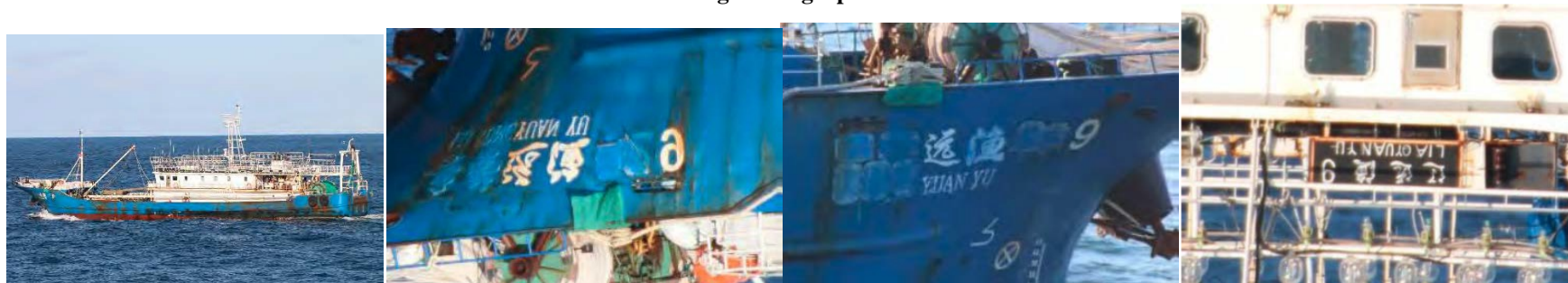
2	LIAO YUAN YU 072	Unknown	Not known	Not known	Not known	Not known	29 Aug. 2017	It was seen at 42°18.7'N, 153°27.9'E on 23 Aug and at 42°9.2'N, 151°16.4'E on 11 Oct 2016. Vessel name was hidden by paint. (Port displayed on the vessel: Shidao; Vessel type; Lighted lift net vessel; Tonnage: 800t)
---	---------------------	---------	-----------	-----------	-----------	-----------	--------------	---

g. Photographs



3	LIAO YUAN YU 9	Unknown	Not known	Not known	Not known	Not known	29 Aug. 2017	It was seen at 42°3.0'N, 153°0.8'E on 23 Aug and at 42°10.0'N, 151°16.8'E on 11 Oct 2016. Vessel name was hidden by paint. (Port displayed on the vessel: Shidao; Vessel type; Lighted lift net vessel; Tonnage: 800t)
---	----------------	---------	-----------	-----------	-----------	-----------	--------------	--

g. Photographs



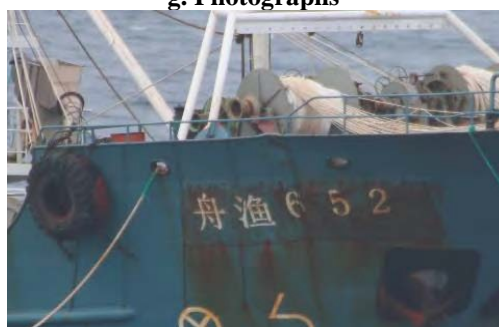
4	ZHOU YU 651	Unknown	Not known	Not known	Not known	Not known	29 Aug. 2017	It was seen at 42°30'2N, 152°05'4E on 29 Sep 2016. (Port displayed on the vessel: Fungcheng; Vessel type; Lighted lift net vessel; Tonnage: 850t)
---	-------------	---------	-----------	-----------	-----------	-----------	--------------	---

g. Photographs



5	ZHOU YU 652	Unknown	Not known	Not known	Not known	Not known	29 Aug. 2017	It was seen at 42°48.9'N, 152°48.2'E on 7 Sep 2016. Port of registry was hidden by paint. (Vessel type; Lighted lift net vessel; Tonnage: 820t). MMSI: 412569986
---	-------------	---------	-----------	-----------	-----------	-----------	--------------	--

g. Photographs



6	ZHOU YU 653	Unknown	Not known	Not known	Not known	Not known	29 Aug. 2017	<p>It was seen with LU RONG YU YUN 56219 and ZHOU YU 656 at 42°11.9'N, 151°14.6'E on 30 Sep 2016. (Port displayed on the vessel: Fungcheng; Vessel type; Lighted lift net vessel; Tonnage: 850t)</p> <p>Communication between Japanese patrol vessel and LU RONG YU YUN 56219 indicated ZHOU YU 653 were transshipping 1500t of mackerel together with ZHOU YU 656.</p>
---	-------------	---------	-----------	-----------	-----------	-----------	--------------	---

g. Photographs



7	ZHOU YU 656	Unknown	Not known	Not known	Not known	Not known	29 Aug. 2017	<p>It was seen with LU RONG YU YUN 56219 and ZHOU YU 656 at 42°11.9'N, 151°14.6'E on 30 Sep 2016. (Port displayed on the vessel: Fungcheng; Vessel type; Lighted lift net vessel; Tonnage: 850t) Note that the same vessel name with the different port of registry (Zhoushan) (600t) has been seen in the similar area.</p> <p>Communication between Japanese patrol vessel and LU RONG YU YUN 56219 indicated ZHOU YU 656 were transshipping 1500t of mackerel together with ZHOU YU 653. MMSI: 100900240 412440242</p>
g. Photographs (No Photographs Available)								

8	ZHOU YU 657	Unknown	Not known	Not known	Not known	Not known	29 Aug. 2017	It was seen at 42°35.5'N, 152°6.7'E on 12 Sep 2016. (Port displayed on the vessel: Zhoushan; Vessel type; Lighted lift net vessel; Tonnage: 600t)
---	-------------	---------	-----------	-----------	-----------	-----------	--------------	---

g. Photographs



9	ZHOU YU 658	Unknown	Not known	Not known	Not known	Not known	29 Aug. 2017	It was seen at 40°12.3'N, 148°40.5'E on 29 May 2016 and at 42°46.7'N, 152°41.2'E on 7 Sep 2016. (Port displayed on the vessel: Zhoushan; Vesseltype; Lighted lift net vessel; Tonnage: 600t)
---	-------------	---------	-----------	-----------	-----------	-----------	--------------	--

g. Photographs



10	ZHOU YU 659	Unknown	Not known	Not known	Not known	Not known	29 Aug. 2017	It was seen in the NPFC area on 2, 4, 13, 17 Jun and 7 Sep 2016. On 4 Jun the vessel name on the right side was hidden by paint. (Port displayed on the vessel: Zhoushan; Vessel type: Lighted lift net vessel; Tonnage: 600t)
----	-------------	---------	-----------	-----------	-----------	-----------	--------------	--

g. Photographs



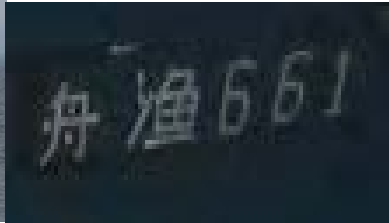
11	ZHOU YU 660	Unknown	Not known	Not known	Not known	Not known	29 Aug. 2017	It was seen in the Japanese EEZ on 10 May 2016 and in NPFC area multiple times from May to Sep 2016. On 10 May the vessel showed Korean flag but changed the Korean to Japanese flag when the Japanese patrol vessel approached. Vessel name changed between 15 May and 12 Sep 2016 (see the photos). The vessel is not permitted in Japan nor registered in NPFC. (Port displayed on the vessel: Basuo-not apparent; Vessel type: Lightedlift net vessel; Tonnage: 600t)
----	-------------	---------	-----------	-----------	-----------	-----------	--------------	--

g. Photographs



12	ZHOU YU 661	Unknown	Not known	Not known	Not known	Not known	29 Aug. 2017	It was seen in the Japanese EEZ on 10 and 13 May 2016 and in NPFC area on 15, 29 May and 7 Sep 2016. The vessel names on the left and right side changed frequently (see the photos). The vessel showed Japanese flag in May. But the vessel is not permitted in Japan nor registered in NPFC. (Port displayed on the vessel: Shidao; Vessel type: Lighted lift net vessel; Tonnage: 600t)
----	-------------	---------	-----------	-----------	-----------	-----------	--------------	--

g. Photographs



13	HAI DA 705	Unknown	Not known	Not known	Not known	Not known	29 Aug. 2017	Communications between Japanese Patrol vessel and HAI DA705 at 43°10.4'N, 153°38.6'E on 11 Sep 2016 indicated they caught squid with drift net in the high sea. (Port displayed on the vessel: 沈家们; Vessel type: Drift net vessel; Tonnage: 290t)
----	------------	---------	-----------	-----------	-----------	-----------	--------------	---

g. Photographs



14	LU RONG YU 1189	Unknown	Not known	Not known	Not known	Not known	29 Aug. 2017	It was seen at 41°24.9'N, 140°32.7'E (Japan EEZ) on 14 Jun 2016. (Port displayed on the vessel: Shidao; Vessel type: Carrier vessel; Tonnage: 100t) MMSI: 412321992
----	-----------------	---------	-----------	-----------	-----------	-----------	--------------	---

g. Photographs



15	ZHE LING YU LENG 90055	Unknown	Not known	Not known	Not known	Not known	29 Aug. 2017	It was seen at 40°25.3'N, 149°13.2'E on 29 May 2016. (Port displayed on the vessel: Wenling; Vessel type: Carrier vessel; Tonnage: 600t) MMSI: 412000000 413202046
----	------------------------	---------	-----------	-----------	-----------	-----------	--------------	--

g. Photographs



16	ZHE LING YU LENG 905	Unknown	Not known	Not known	Not known	Not known	29 Aug. 2017	It was seen at 42°45.6'N, 152°45.8'E on 24 Aug 2016. (Port displayed on the vessel: Wenling; Vessel type: Carrier vessel; Tonnage: 1000t) MMSI: 412000000 412000256
g. Photographs (No Photographs Available)								

17	LU RONG YUAN YU 101	unknown	Not known	Not known	Not known	Not known	13 Nov. 2017	While LU RONG YUAN YU 101 is registered as a light PS vessel in the NPFC list, the identical name with different vessel types were seen. LU RONG YUAN YU 101 with lift net type was seen at 49°9.2'N, 149°19.5'E on 17 May 2016. LU RONG YUAN YU 101 with stern-trawl type was seen at 38°0.2'N, 145°58.5'E on 20 May 2016. (Port displayed on the vessel: Shidao; Vessel type: Stern Trawl/Light lift net vessel; Tonnage: 800t/651t) MMSI: Lift Netter 656558842 Trawler 412328753
----	------------------------	---------	-----------	-----------	-----------	-----------	--------------	--

g. Photographs



18	LU RONG YUAN YU 102	unknown	Not known	Not known	Not known	Not known	13 Nov. 2017	<p>While LU RONG YUAN YU 102 is registered as one light PS vessel in the NPFC list, the identical name with different vessel types were seen. LU RONG YUAN YU 102 with lift net type was seen at 42°21.3'N, 151°55.5'E on 11 Oct 2016. LU RONG YUAN YU 102 with stern-trawl type was seen at 42°7.3'N, 151°13.8'E on the same day. LU RONG YUAN YU 102 was also seen with a carrier vessel "MIN FU DING YU LENG 08888" at 42°22.2'N, 151°19.6'E on 12 Oct 2016. (Port displayed on the vessel: Shidao; Vessel type: Stern Trawl/Light lift net vessel; Tonnage: 800t/651t) MMSI: Trawler 412328752; Lift Net 413228752</p>
----	---------------------	---------	-----------	-----------	-----------	-----------	--------------	--

g. Photographs



19	LU RONG YUAN YU 103	unknown	Not known	Not known	Not known	Not known	13 Nov. 2017	While LU RONG YUAN YU 103 is registered as one light PS vessel in the NPFC list, the identical name with different vessel types were seen. LU RONG YUAN YU 103 with lift net type was seen at 40°25.9'N, 150°9.9'E on 1 June 2016. LU RONG YUAN YU 103 with stern-trawl type was seen at 37°59.9'N, 145°58.5'E on 20 May 2016. (Port displayed on the vessel: Shidao; Vessel type: Stern Trawl/Light lift net vessel; Tonnage: 651t/651t) MMSI: Lift Net & Trawler 412328751
----	---------------------	---------	-----------	-----------	-----------	-----------	--------------	--

g. Photographs



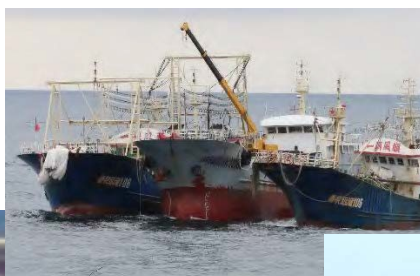
20	LU RONG YUAN YU 105	unknown	Not known	Not known	Not known	Not known	13 Nov. 2017	While LU RONG YUAN YU 105 is registered as one light PS vessel in the NPFC list, the identical name with different vessel types were seen. LU RONG YUAN YU 105 with lift net type was seen at 42°27'N, 152° 5.8'E on 11 Oct 2016. LU RONG YUAN YU 105 with stern-trawl type was seen at 41°54.8'N, 151°17.4'E on 5 Sep 2016. (Port displayed on the vessel: Shidao; Vessel type: Stern Trawl/Light lift net vessel; Tonnage: 651t/651t) MMSI: Lift Netter 926001560 412428757 Trawler 412328749
----	---------------------	---------	-----------	-----------	-----------	-----------	--------------	---

g. Photographs



21	LU RONG YUAN YU 106	Unknown	Not known	Not known	Not known	Not known	13 Nov. 2017	<p>While LU RONG YUAN YU 106 is registered as one light PS vessel in the NPFC list, the identical name with different vessel types were seen. LU RONG YUAN YU 106 with lift net type was seen at 40°30.4'N, 149°34'E on 29 May 2016. LU RONG YUAN YU 106 with stern-trawl type was seen at 40°17.6'N, 148°33'E on the same day.</p> <p>The two fishing vessels with duplicate names "LU RONG YUAN YU 106" were seen transshipping with a carrier vessel "MIN FU DING YU LENG 08888" at 42°16.4'N, 151°21.4'E on 8 Oct 2016 (see the last photo). (Port displayed on the vessel: Shidao; Vessel type: Stern Trawl/Light lift net vessel; Tonnage: 651t/651t) MMSI: Lift Netter 412328748 Trawler 412328748</p>
----	---------------------	---------	-----------	-----------	-----------	-----------	--------------	---

g. Photographs



22	LU RONG YUAN YU 108	Unknown	Not known	Not known	Not known	Not known	13 Nov. 2017	While LU RONG YUAN YU 108 is registered as one light PS vessel in the NPFC list, the identical name with different vessel types were seen. LU RONG YUAN YU 108 with lift net type was seen at 40°28.4'N, 149°28.1'E on 29 May 2016. LU RONG YUAN YU 108 with stern-trawl type was seen at 40°18.6'N, 148°30.7'E on the same day. (Port displayed on the vessel: Shidao; Vessel type: Stern Trawl/Light lift net vessel; Tonnage: 651t/651t) MMSI: Trawler 800024754 Lift Netter 412443265 412328746 800025754
----	---------------------	---------	-----------	-----------	-----------	-----------	--------------	---

g. Photographs



23	LU RONG YUAN YU 109	Unknown	Not known	Not known	Not known	Not known	13 Nov. 2017	<p>While LU RONG YUAN YU 109 is registered as one light PS vessel in the NPFC list, the identical name with different vessel types were seen. LU RONG YUAN YU 109 with lift net type was seen at 40°25.1'N, 149°25 'E on 29 May 2016. LU RONG YUAN YU 109 with stern-trawl type was seen at 40°16.4'N, 148°32.1'E on the same day. (Port displayed on the vessel: Shidao; Vessel type: Stern Trawl/Light lift net vessel; Tonnage: 651t/651t) MMSI: Trawler 412328745 800025747 Lift Netter 412328745</p>
----	---------------------	---------	-----------	-----------	-----------	-----------	--------------	---

g. Photographs



24.	LU RONG●YU 612	Unknown	Not known	Not known	Not known	Not known	19 Aug 2018	<p>A Japanese patrol vessel sighted this fishing vessel was drifting in the Convention area at 39°50.00'N, 147°1.8'E on July 21.</p> <p>The port of registry is Shidao and AIS information showed that the vessel name is “Lu Long Yuan Yu 108”, which is on the current IUU vessel list and is different from the name shown on the vessel side, and that MMSI is 412328746.</p> <p>The tonnage 651 t was derived from the information of “Lu Long Yuan Yu 108” in the current IUU vessel list.</p> <p>Ref: NPFC-2018-TCC03-WP04</p>
-----	----------------	---------	-----------	-----------	-----------	-----------	-------------	---

g. Photographs



25.	LU RONG YUAN YU 787	Unknown	Not known	Not known	Not known	Not known	19 Aug 2018	A Japanese patrol vessel sighted this fishing vessel was drifting in the Convention area at 39°49.7'N, 147°2.8'E on July 21 2017, and Japanese patrol aircraft sighted the same vessel anchored at 41°3.3'N, 150°22.1'E on August 2 2017. The China flag was raised and the sign of "CHINA" was painted on the vessel side (see the photos). MMSI is 413800814 and the port of registry is Shidao. Ref: NPFC-2018-TCC03-WP04
-----	------------------------	---------	-----------	-----------	-----------	-----------	-------------	--

g. Photographs



26.	LU RONG YUAN YU YUN 958	Unknown	Not known	Not known	Not known	Not known	19 Aug 2018	A Japanese patrol fishing vessel sighted this fishing vessel was drifting in the Convention area at 39°50.9'N, 147°4.3'E on July 21. The vessel raised China flag and the port of registry was Shidao. AIS information showed that the vessel name is 958 and MMSI is 412452812. Ref: NPFC-2018-TCC03-WP04
-----	----------------------------	---------	-----------	-----------	-----------	-----------	-------------	---

g. Photographs



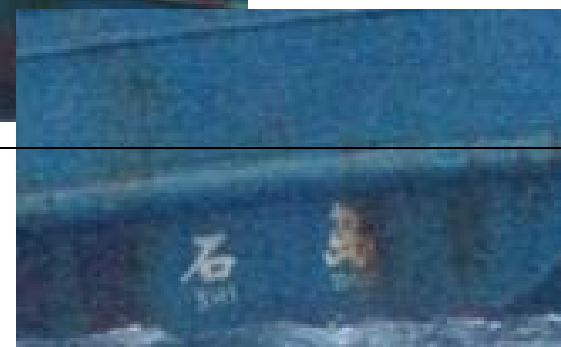
27.	LU RONG YUAN YU 797	Unknown	Not known	Not known	Not known	Not known	19 Aug 2018	A Japanese patrol aircraft sighted this fishing vessel in the Convention area was operating at 42°7.1'N, 151°40.9'E on July 7 2017. China flag was raised and "CHINA" was painted on the vessel side (see the photo). MMSI is 412327980. Ref: NPFC-2018-TCC03-WP04
-----	------------------------	---------	-----------	-----------	-----------	-----------	-------------	--

g. Photographs



28	LU RONG SHUI 158 (鲁荣水158)	Unknown	Not known	Not known	Not known	Not known		CMM 2017-02 para 3. a	A Japanese patrol vessel sighted this fishing vessel in the Convention area at 39°59.2'N, 147°39.7'E on July 7, 2018. There is no vessel registration of this vessel on the NPFC vessel register. MMSI 412688540
----	------------------------------	---------	-----------	-----------	-----------	-----------	--	--------------------------	--

g. Photographs



29	Unknown(*)	Unknown – raised flag of China	Not known	Not known	Not known	Not known		CMM 2017-02 para 3. a	A Japanese trawl vessel sighted this fishing vessel indicating its vessel name “ZHOU YU 808” MMSI 412671880, in the Koko seamount area of Convention area at 36°44'N, 171°27'E on August 29, 2018, allegedly conducted fishing for deep sea coral. There was a duly registered vessel with the same name “ZHOU YU 808” on the NPFC vessel registry, but it is confirmed that the sighted vessel is not the duly licensed one.
----	------------	--------------------------------	-----------	-----------	-----------	-----------	--	-----------------------	---

g. Photographs



Associated Documents

Circular 030-2018 (<https://www.npfc.int/system/files/2018-11/Circular%20030-2018%20Sighting%20Information%20of%20Fishing%20Vessels%20without%20Nationality.pdf>)
 Japanese Document (<https://www.npfc.int/system/files/2018-11/Sighting%20infomation%20from%20Japan.pdf>)

(*) This vessel indicated its name as “ Zhou Yu 808 (舟漁 808)” when sighted.

30	Unknown (*)	Unknown – raised flag of China	Not known	Not known	Not known	Not known		CMM 2017-02 para 3. a	A Japanese trawl vessel sighted this fishing vessel indicating its vessel name “ZHOU YU 809” MMSI 412401260, in the Koko seamount area of Convention area at 36°44'N, 171°27'E on August 29, 2018, allegedly conducted fishing for deep sea coral. There was a duly registered vessel with the same name “ZHOU YU 809” on the NPFC vessel registry, but it is confirmed that the sighted vessel is not the duly licensed one.
----	-------------	--------------------------------	-----------	-----------	-----------	-----------	--	-----------------------	---

g. Photographs



Associated Documents

Circular 030-2018 (<https://www.npfc.int/system/files/2018-11/Circular%20030-2018%20Sighting%20Information%20of%20Fishing%20Vessels%20without%20Nationality.pdf>)
 Japanese Document (<https://www.npfc.int/system/files/2018-11/Sighting%20infomation%20from%20Japan.pdf>)

(*) This vessel indicated its name as “ZHOU YU 809 (舟漁809)” when sighted.

31	YUANDA 6 (Assumed from MMSI number)	Unknown – raised flag of China	Not known	Not known	Not known	Not known		CMM 2017-02 para 3. a	A Japanese patrol vessel sighted this vessel conducting fishing operation in the Convention area at 25°45'9N, 147°07'06E on April 15, 2019. This nameless vessel (assumed “YUANDA6” from the vessel’s NMSI) was operating and running away when the Japanese patrol vessel approached.
----	---	--------------------------------------	-----------	-----------	-----------	--------------	--	--------------------------	--

g. Photographs



32	YUANDA 8 (Assumed from MMSI number)	Unknown – raised flag of China	Not known	Not known	Not known	Not known		CMM 2017-02 para 3. a	A Japanese patrol vessel sighted this fishing vessel conducting fishing operation in the Convention area at 25°46'02N, 147°07'08E on April 15, 2019. This nameless vessel (assumed “YUANDA8” from the vessel’s NMSI) was operating and running away when the Japanese patrol vessel approached .
----	--	--------------------------------	-----------	-----------	-----------	-----------	--	-----------------------	--

g. Photographs



33	ZHEXIANG YU 23029	Unknown – raised flag of China	Not known	Not known	Not known	Not known		CMM 2017-02 para 3. a	A Japanese patrol vessel sighted this fishing vessel in the Convention area at 25°42'03N, 147°11'02E on April 15, 2019. This vessel apparently had just finished as the gear was wet. the vessel name, which was not registered on the NPFC vessel registry, was erased deliberately.
----	----------------------	--------------------------------------	-----------	-----------	-----------	--------------	--	--------------------------	---

g. Photographs



34	Unknown	No Nationality						CMM2019-01(para5)	A Japanese patrol vessel sighted this fishing vessel displaying the name LU RONGYUAN YU 581 鲁荣远渔 581 in the Convention area at 41°11.6'N, 174°17.7'W on July 15, 2020. This vessel was fishing under the name of a legally authorized vessels which was not in the Convention Area, consequently this vessel was conducting IUU fishing and did not display an IRCS.
----	---------	----------------	--	--	--	--	--	-------------------	--

g. Photographs - Photos taken at 10:15 on July 15, 2020



35	Unknown	No Nationality					CMM2019-01(para5)	<p>A Japanese patrol vessel sighted this fishing vessel displaying the name LU RONG YUAN YU 582 鲁荣远渔 582 in the Convention area at 41°11.4'N, 174°22.9'W on July 15, 2020.</p> <p>This vessel was fishing under the name of a legally authorized vessels which was not in the Convention Area, consequently this vessel was conducting IUU fishing and did not display an IRCS.</p>
----	---------	----------------	--	--	--	--	-------------------	---

g. Photographs - Photos taken at 10:46 on July 15, 2020



36	Unknown	No Nationality						CMM2019-01(para5)	<p>A Japanese patrol vessel sighted this fishing vessel displaying the name LU RONG YUAN YU 197 鲁荣远渔 197 in the Convention area at 41°11.3'N, 174°20.3'W on July 15, 2020.</p> <p>This vessel was fishing under the name of a legally authorized vessels which was not in the Convention Area, consequently this vessel was conducting IUU fishing and did not display an IRCS.</p>
----	---------	----------------	--	--	--	--	--	-------------------	---

g. Photographs - Photos taken at 11:14 on July 15, 2020



37.	ZHONG FU HAO 111 (Vessel type: Carrier, previously HUMBOLDY BAY)	(Panama) (Liberia)	FUWANTONG OCEAN SHIPPING CO., LIMITED..	Ke Benwen	HO4706	8907888		CMM2021-01 (para1,2,3,6,9, 10) CMM2019-02 (para3)	This vessel was observed conducting unauthorized transshipment activities in the NPFC Convention Area on September 6, 2021.
-----	--	--------------------	---	-----------	--------	---------	--	--	---

g. Photographs

Photos taken at 7:43 (JST) on September 6, 2021



38.	GLORIWAVE	(Sierra Leone)			T8A4017	9017666		CMM2021-01(para1,2,3,6,9,10), CMM2019-02(para3)	This vessel was observed conducting unauthorized bunkering activities in the NPFC Convention Area on June 26, 2022. NOTE: TCC06 was informed that the vessel is understood to have flagged to Palau, and later Togo, and may also be using the name RIWA.
-----	-----------	----------------	--	--	---------	---------	--	--	--

g. Photographs



39.	QIAN YUAN	Panama	GINSIL HOLDING GROUP LIMITED	PHAM HONG NAM	H3YK (5VEZ8)	8819691	<p>JAPAN: CMM2021-01(para1,2,3,6,9,10), CMM2019-02(para3), CMM2021-09(para38)</p> <p>PANAMA: As per Annex A, items i and j</p>	This vessel was observed conducting unauthorized transshipment activities in the NFPC Convention Area between June 23 and 26, 2022.
-----	-----------	--------	------------------------------	---------------	--------------	---------	--	---

g. Photographs



40.	SHUN HANG (VILA MOOSUN)		(Panama) (Tuvalu)	SHUNHANG INTERNATIO NAL SHIPPING CO.,LIMITED	HOWLA DER MD NAJIR	H3DE	8214645		CMM2021-12 (para7)	This vessel was observed actively engaged in transshipment activities in the Convention Area on September 17th and a review showed it had not transmitted required VMS positional data to the NPFC Secretariat between September 16th and September 21st, 2022.
-----	-------------------------------	--	----------------------	--	--------------------------	------	---------	--	-----------------------	---

g. Photographs

